

[INSIGHTS +]

GAIN INSIGHTS

Take your team to the next level.

We feel your pain...

Are you tired of trying to predict the future needs of your team? Done with spending your training budget on blanket solutions that don't address your company's specific needs?

The challenge of assessing IT staff skills can feel like teaching a goldfish to play the clarinet – there's no playbook, no clear starting point, and getting started can seem overwhelming - but it doesn't have to be that way.

The solution...

Your frustrations are common, and that's why we built an efficient, easy solution - Insights. It does more than simply answer your questions: It goes a step further and offers detailed solutions, support, and strategy.

How it works...

A snappy one-hour assessment by Insights will provide key diagnostics for a whole team in about an hour. Pre- and post- assessment is taken with Insights, which generates a data analysis report, issues recommendations and a training plan via Bespoke training curriculum, provided by ACI Learning.



Prove skills

Practical labs allow trainees to prove their skills



Analyze results

Visual analysis, organized by topics



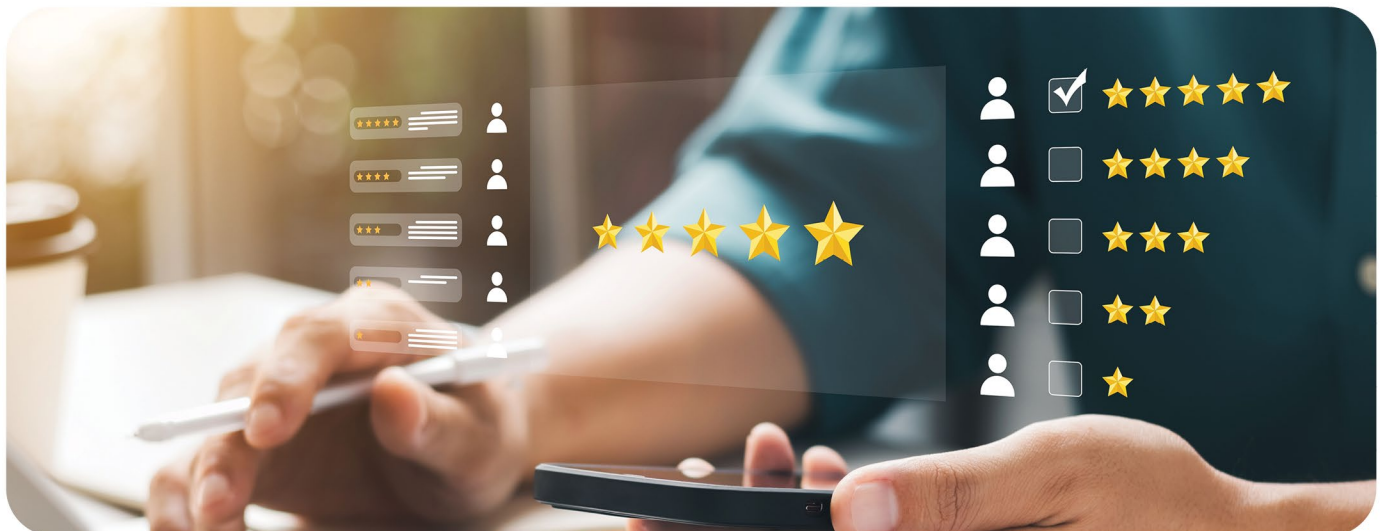
Compare results


Level your results against other organizations



View recommendations

Individual/Team view recommendations





The solution IT managers have been dreaming of.

Identify skills gaps

Gaps in the tech landscape will continue to affect companies and industries.

Empower your team

70 percent of executives are concerned current employees lack the tech skills required to lead a business into the future.

Personalize your training

Blanket training wastes time and money.

Increased demand

The speed of adopting new technology and the need to keep IT staff updated is critical.

Protect your systems

Data protection and cybersecurity is necessary and in-demand.

[INSIGHTS +]

Take your team to the next level.

Insights identifies your team's weaknesses, provides management and individuals with clear and visual assessments, and assists in professional development planning.

[Contact us to get started!](#)